

ASSEMBLY INSTRUCTIONS



SVEVO PIVOT - SFORZESCO PIVOT



SECURITY DOORS





PIVOT

Dear client,
Thank you for purchasing a Scrigno security door. Please follow the instructions given below to install your new security door.

GENERAL INFORMATION:

- Unpack the door carefully so as not to damage it.
- Do not use a box cutter or sharp tools to open the packaging.
- Take care when handling or storing the product.
- The standard supply (if the subframe has already been delivered) for a single panel door is composed of a single package containing the door, the frame and two boxes of hardware.

STEP 1. INSTALLING THE FRAME

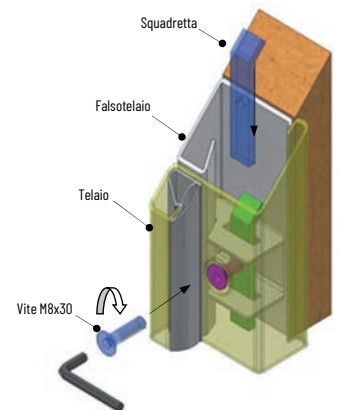
Insert the metal plates into the cages taking care to keep them as far as possible towards the inner side. Place the frame (with the door installed into it) onto the subframe (previously cemented or anchored to the wall). Open the door 90° and support it with a 5-7 mm shim

Secure the frame to the subframe on the lock and hinge sides with the M8x30 screws included in the box of hardware. (fig. 1 and 2).

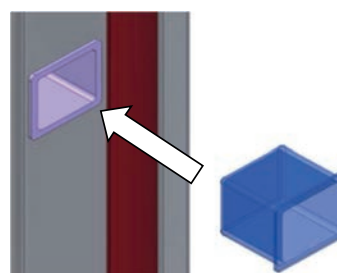
1



2



3



Fit the caps to the holes in the security plates on the hinge side upright (fig. 3)



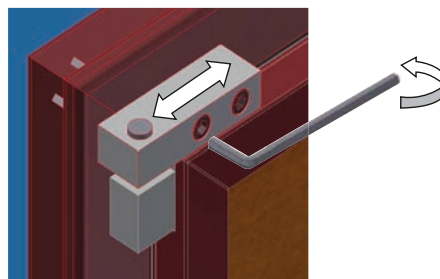
STEP 2. INSTALLING THE DOOR PANEL

Once the door panel and frame have been installed to the subframe, the door must be adjusted with its hinges.

The Pivot hinges are adjustable on 2 axes (vertically and horizontally).

To adjust them, use the appropriate hex key to set the screws on the top and bottom sections of the hinges themselves. While doing so, check that the bolts maintain their alignment with the holes in the frame.

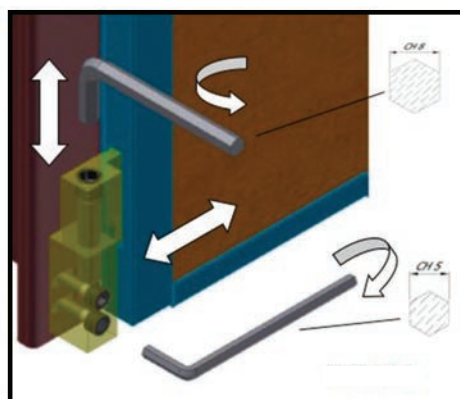
4



5



6



HORIZONTAL AND VERTICAL ADJUSTMENT (fig. 4-5-6)

CAUTION: THIS MODEL OF HINGE IS NOT COMPATIBLE WITH DOORS FITTED WITH A FANLIGHT OR SIDELIGHT.

PIVOT

STEP 3. INSTALLING THE CYLINDER

Install the cylinder as follows.

The screw securing the cylinder must never be completely turned out: it does not itself go into the cylinder, but rather drives a rod which goes into the threaded hole in the cylinder (fig. 7).

DO NOT FOR ANY REASON USE THE SCREW INCLUDED IN THE CYLINDER PACKAGE.

- Insert the cylinder (from the inside to the outside of the door), and use the key or knob to check that it operates.

- Once you have managed to give it at least one turn, release the screw and tighten it down (but not fully).

- Try turning the lock its full number of times, checking that the key rotates smoothly.

If you can turn the lock all the way without difficulty, tighten the screw fully down. Unturn the lock completely and use the key or knob to check that you can also retract the bolt.

- With the door still open, try turning the lock fully from the outside as well.

- If the door has a cylinder equipped for an internal thumb turn, the cylinder is not installed in the lock but is included in the box of accessories.

Once the cylinder has been installed, the length of the internal shank must be adjusted by cutting it with a hacksaw (we recommend measuring it and cutting the shank with the cylinder extracted from its mounted position).

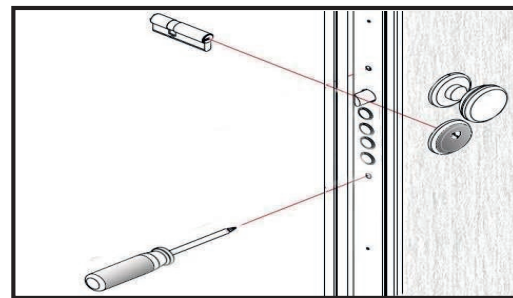
- All cylinders have an installer key and 5 user keys. To switch from the installer key to the user key, proceed as follows: with the door open, fit a user key into the external keyhole, turn the lock fully closed and then fully open again and extract the key.

The installer key will no longer work at this point. Repeat the same operation from the inside (if the cylinder is not fitted with a thumb turn).

Now close the door and check that the centre of the bolt is aligned with the centre of the hole in the frame; adjust the hinges up/down if necessary to achieve this.

Check that the door panel is completely snug against the frame along its entire height, and adjust the frame outwards or inwards if necessary.

7



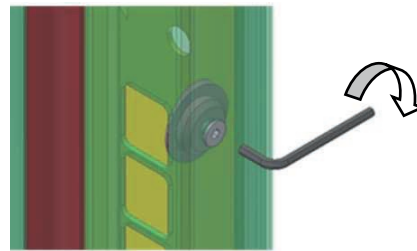


STEP 4. ADJUSTING THE BOLT AND DRAUGHT EXCLUDER

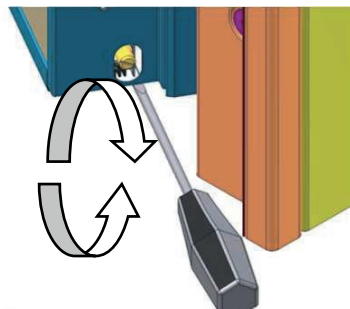
Adjust the bolt so that the door does not move relative to the frame when closed: turn the bolt adjuster by hand to do so (fig. 8).

Adjusting the mobile threshold: turn the screw counterclockwise to lower the mobile threshold and clockwise to raise it (fig. 9). Check that it is properly positioned when the door is closed.

8



9



STEP 5. INSTALLING THE HANDLE

INNER HANDLE

Fit the plastic handle washers (on the inner side) using only the 3.5X22 TPS screws, with the plastic reference at the bottom (fig. 10).

10



OUTER HANDLE

Fit the plastic handle washers (on the outer side) using only the 3.5X16 TPS screws, with the plastic reference at the bottom (fig. 11).
Combined with square section operating rod.

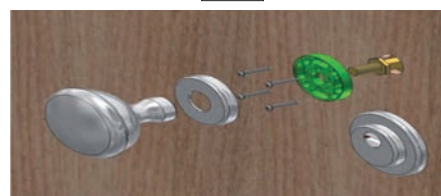
11



IN-LINE OUTER KNOB

Fit the plastic handle washers (on the outer side) using only the 3.5X16 TPS screws, with the plastic reference at the bottom (fig. 11 A).
Fit the dummy square section rod to the fixed knob or the square section operating rod to the rotary knob.

11 A



PIVOT

FIXED OUTER KNOB

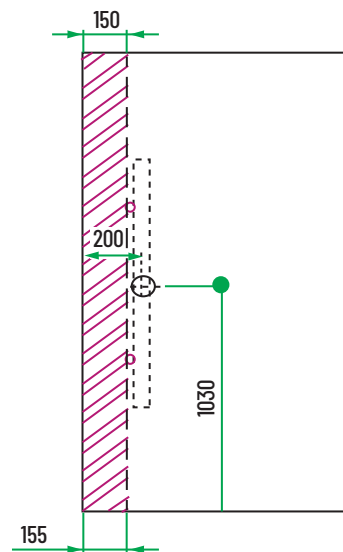
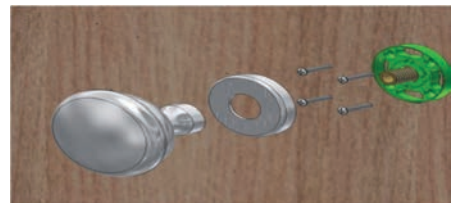
Fit the plastic handle washers (on the outer side) using only the 3.5X16 TPS screws, with the plastic reference at the bottom (fig. 11B).

Each type of knob has its own mount.

For a fixed knob (considering all types of smooth, engraved and rusticated panels), do not apply the knob to the 200 mm wide strip shown in the figure, to avoid damaging the closing block.

Use only the screws included in the bag of hardware.

11 B



STEP 6. FINAL STEP

Clean all the door's components with a non-abrasive damp cloth and a dry cloth.

Best regards
Scrigno Spa



www.scrigno.net